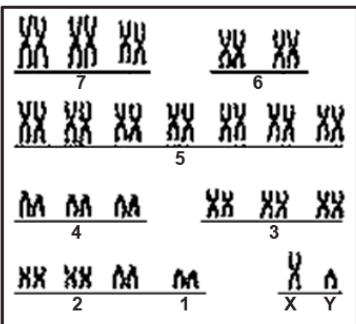
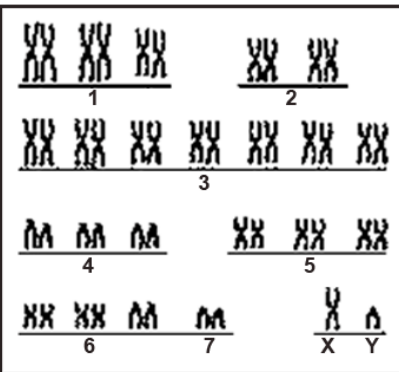
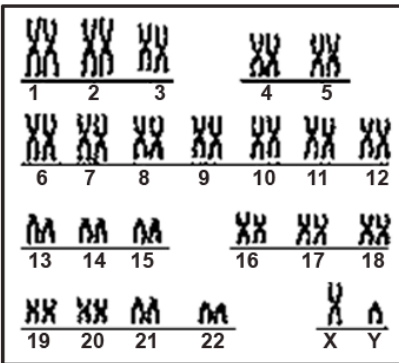
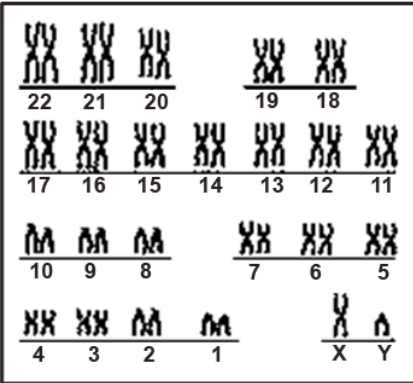
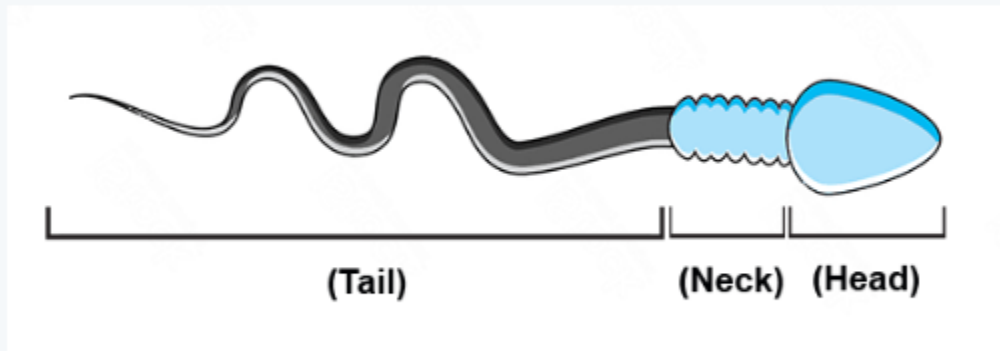


1- Which figure is the most valid to express the karyotype of the human male?



2- W

The following diagram illustrates the structure of human sperm,



which is/are the sexual chromosome(s) found in the head?

- Either chromosome (X) or (Y).
- Both chromosomes (X) and (Y).
- Always chromosome (X).
- Always chromosome (Y).

3- Two strains of the pea flower plant were crossed together; one of which is pink flower and the other is white flower.

The ratio of the colour of the resulting plant flower is (3) pink : (5) white

What are genotypes of the parents?

- $AaBb \times aaBb$
- $aabb \times AABB$
- $aaBb \times AABB$
- $AaBB \times aaBb$

4- A normal man married a woman with Down's syndrome.
Which one of the following individuals can't be their child?

- Female with Down's syndrome.
- Normal male.
- Male with Klinefelter's syndrome.
- Normal female.

5- The increase of phenyl Keaton in urea (PKU) is a genetic disease, and it was observed that the people who carry that gene did not show its symptoms by following a special diet.
What do you deduce from this phrase?

- The gene causing the disease (PKU) is a recessive gene.
- The gene causing the disease (PKU) has a weak effect.
- Following a healthy diet cures all genetic diseases.
- The effect of (PKU) gene depends on environmental factors.

6- A young man married a woman (both are normal) and had a girl who will not reach puberty and suffers from congenital defects in heart and kidneys.
Which of the following is the chromosomal structure of the mother?

- (44+XX)
- (23+XX)
- (45+XX)
- (22+XX)4

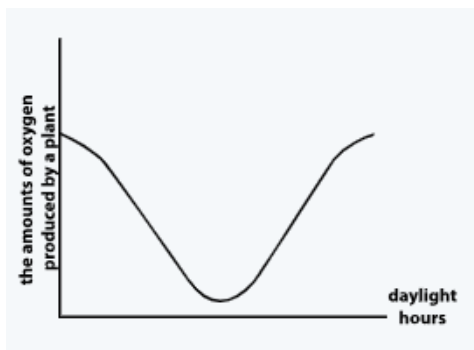
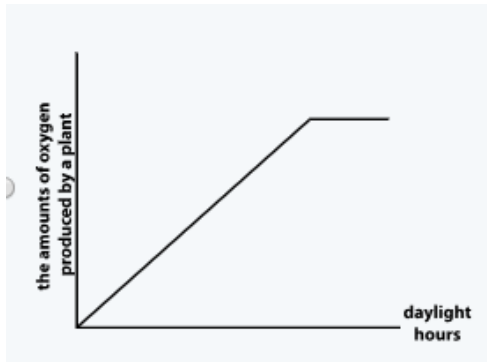
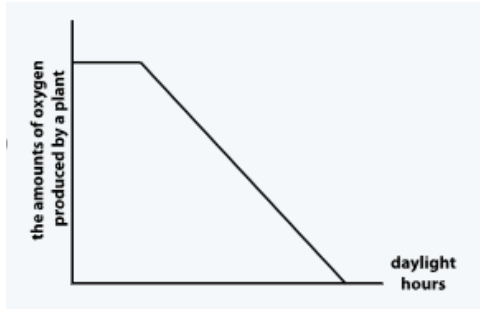
7- A woman has blood group (A) and her husband has blood group (B).
Which genotype of blood group could not be inherited by any of their children?

- AA
- AB
- AO
- OO

8- A man married a woman and had four girls; if the woman got pregnant again,
what is the probability that the fifth child will be a boy ?

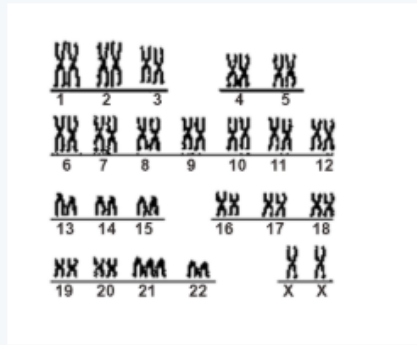
- $1/5$
- $1/4$
- $1/3$
- $1/2$

9- Which of the following graphs shows the effect of Chlorophyll gene on a plant during daylight hours (from sunrise to sunset)?



13- Q

The following figure illustrates the karyotype of an individual



What is the chromosomal structure of the gametes produced by this individual?

A series of horizontal dashed lines provided for the student to write their answer.

